

+ plus Vetericyn®

Livestock Line

FOCUS ON EYE CARE

Vetericyn Plus® Livestock Eye Spray is a next generation eye care solution designed to focus on eyes when showing signs of redness/irritation. This pH-balanced solution is used for cleaning, irrigating and flushing eyes, which sets the stage for optimal healing conditions and provides an advanced alternative to antibiotic solution. Vetericyn Plus is as safe as it is effective.



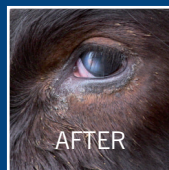
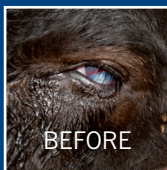
Vetericyn Plus Livestock Eye Spray, is recommended for:
Redness and irritation
Discharge and drainage
Flushing away pollutants and foreign materials

Features:
No ocular irritation
No antibiotics
No withdrawal period
Suitable for food producing animals or animals for human consumption
One person application - easy, effective, efficient

Distributed in the UK by:

 **kela**
focus on health

Tel: 01473 822121 email: Sales@kela.health
www.kela.health



*Administered once a day for 3 days

Manufactured & Bottled by Innovacyn, Inc.
3546 N.Riverside Ave, Rialto CA 92377



HOW TO USE LIVESTOCK EYE CARE

Observe animal's eyes for any signs of redness or irritation.

- ① Set the spray nozzle on stream spray setting.
- ② Spray the first application directly in the eye. (Allow animal to blink)
- ③ Spray the second application on a slight angle toward the nose to flush the eye. (Allow animal to blink)
- ④ Spray the third application directly in the eye. You are done. (Allow animal to blink)
- ⑤ Repeat steps 2 through 4 in the other eye (even if it is not irritated)
- ⑥ If possible, repeat steps 1 through 5 twice per day until condition has cleared up. If condition persists or worsens, consult your veterinarian.

Not recommended to use antibiotic creams or other eye ointment before applying Livestock Eye Care Spray.

No known contraindications. For superficial use with intact cornea.



Distributed in the UK by:



Tel: 01473 822121 email: Sales@kela.health
www.kela.health



Manufactured & Bottled by Innovacyn, Inc.
3546 N.Riverside Ave, Rialto CA 92377